



PARTNERSHIP TO FIGHT CHRONIC DISEASE

Chronic Disease: Costs, Challenges & Opportunities for Improvement In Louisiana

Candace DeMatteis, Policy Director

September 7, 2017

Baton Rouge, Louisiana

Who is PFCD

The Partnership to Fight Chronic Disease (PFCD) is a global coalition of patient, provider, community, business and labor groups, and health policy experts, committed to raising awareness of the **No. 1** cause of death, disability and rising health care costs: chronic disease.

OUR MISSION

- ✓ **EDUCATE** the public about chronic disease and potential solutions for individuals and communities
- ✓ **MOBILIZE** the public to call for change in how governments, employers, and health institutions approach chronic disease
- ✓ **CHALLENGE** policymakers on the health policy changes that are necessary to effectively fight chronic disease

Chronic Disease Burden

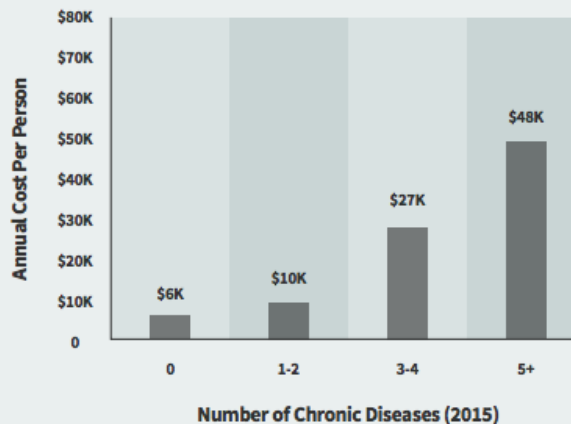


90 cents of every \$1 we spend on health care is associated with the chronically ill.

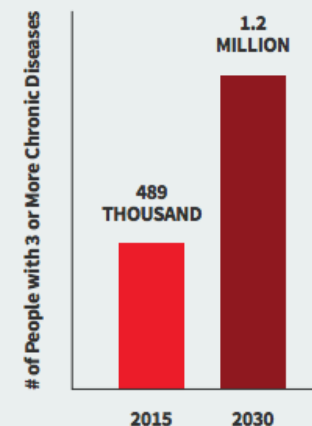
Health care spending is highly concentrated.

5% OF PEOPLE ACCOUNT FOR 50% OF HEALTH CARE SPENDING¹ IN LOUISIANA...

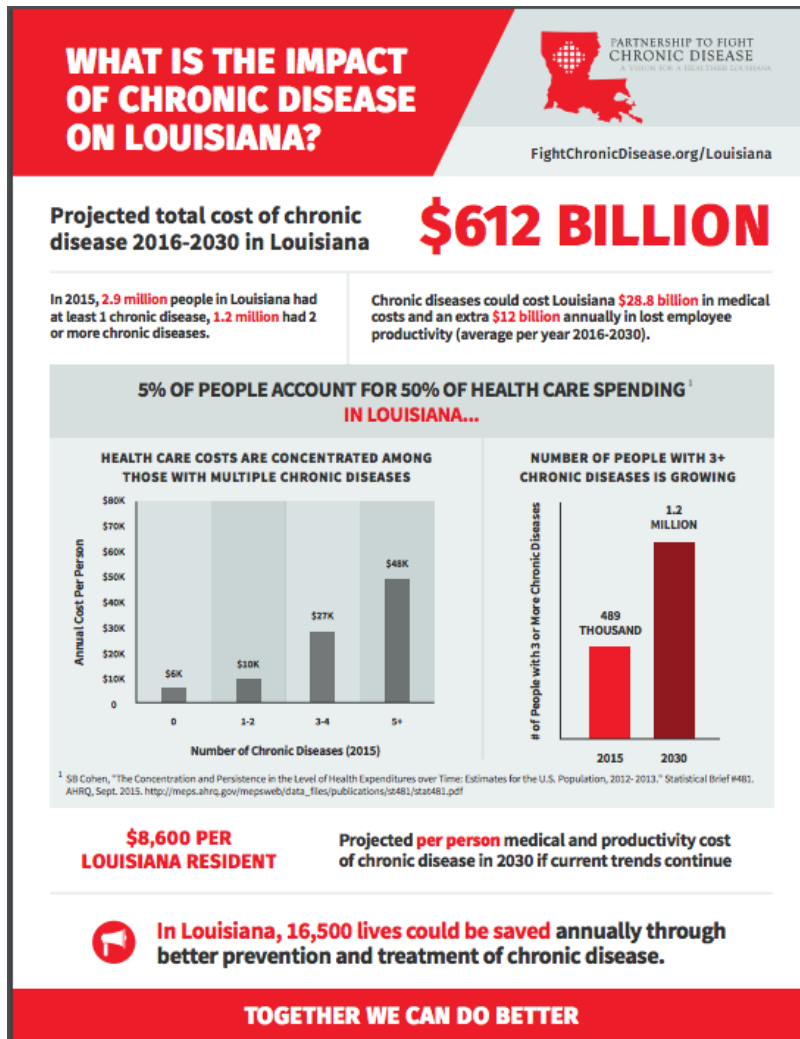
HEALTH CARE COSTS ARE CONCENTRATED AMONG THOSE WITH MULTIPLE CHRONIC DISEASES



NUMBER OF PEOPLE WITH 3+ CHRONIC DISEASES IS GROWING



Louisiana's Chronic Disease Burden



2.9 million people with at least one chronic condition; 1.2 million with 2 or more (and growing).

Economic losses of \$12 BILLION a year in addition to medical costs.

Chronic diseases will cost \$8,600 per resident a year without change.



Louisiana's Mental Health Burden

WHAT DO MENTAL HEALTH CONDITIONS COST LOUISIANA?

\$33.8 BILLION

Projected total cost of mental health conditions 2016-2030 to Louisiana.



FightChronicDisease.org/Louisiana

\$465

Cost per capita to every Louisiana resident annually

TOTAL COST = \$31.2B IN MEDICAL + \$2.6B IN SOCIETAL COSTS

Societal Costs: Lost productivity (state employees), additional jail time (inmates), & nursing home stays (Medicaid).



39% of adults covered by the state have at least 1 mental health condition. That equates to 150,240 adults.

MEDICAID ADULTS: PER CAPITA SPENDING BY HEALTH STATUS

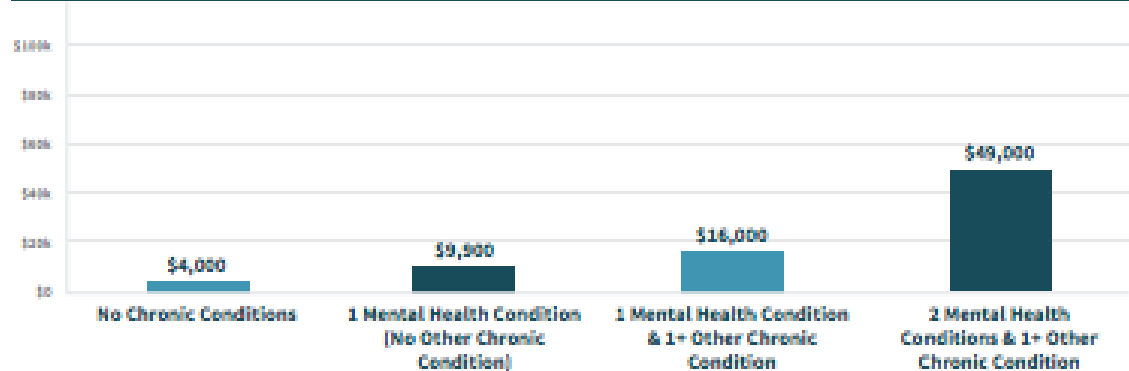
Having Multiple Chronic Conditions Dramatically Increases Medical Costs*



*Though mental health conditions are chronic conditions, for purposes of this graph mental health conditions are shown separately from other chronic conditions. Mental health conditions considered as repetitive, acute, or episodic and not chronic.

MEDICAID ADULTS: PER CAPITA SPENDING BY HEALTH STATUS

Having Multiple Chronic Conditions Dramatically Increases Medical Costs*



STATE OPPORTUNITIES TO SAVE INCLUDE



PRISON SAVINGS

SAVING \$6.8 MILLION

per year in extended jail time.
That's the same as

290 FEWER YEARS OF PRISON



PRODUCTIVITY COSTS

REDUCING THE \$57.7 MILLION

a year in lost productivity among state employees with at least one mental health condition



PARTNERSHIP TO FIGHT CHRONIC DISEASE

Chronic Disease Prevention

Highest burden of chronic disease shares FOUR COMMON Risk Factors:

	<u>Louisiana's Rank</u>
1. Tobacco Use	43 out of 50
2. Excessive drinking	34 out of 50
3. Unhealthy eating	50 out of 50 (obesity)
4. Physical inactivity	45 out of 50



“80% OF PREMATURE HEART DISEASE, STROKE AND DIABETES CAN BE PREVENTED” – World Health Organization

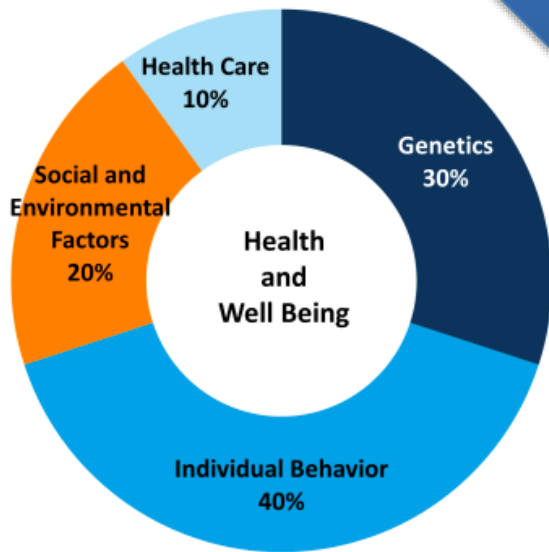
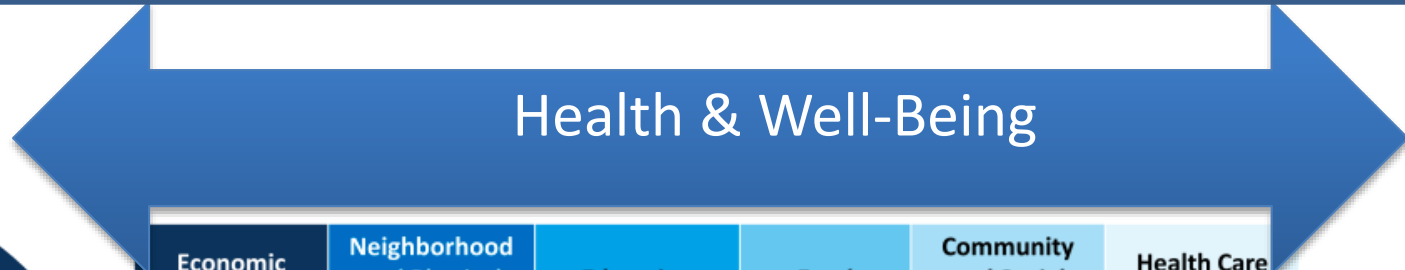


Chronic Disease & Children

- Chronic conditions are on the rise among children.
 - Almost 1 in 5 have diabetes or pre-diabetes.
 - Almost 1 in 10 have asthma.
 - 13-18% of children & adolescents have some form of chronic health condition.
- Minorities and lower income families are disproportionately affected.



Inter-relationship with SDoH and Health



Impact of Factors on Risk of Premature Death

Economic Stability	Neighborhood and Physical Environment	Education	Food	Community and Social Context	Health Care System
Employment	Housing	Literacy	Hunger	Social integration	Health coverage
Income	Transportation	Language	Access to healthy options	Support systems	Provider availability
Expenses	Safety	Early childhood education		Community engagement	Provider linguistic and cultural competency
Debt	Parks	Vocational training	Discrimination	Discrimination	Quality of care
Medical bills	Playgrounds	Higher education			
Support	Walkability				

Health Outcomes
Mortality, Morbidity, Life Expectancy, Health Care Expenditures, Health Status, Functional Limitations

SOURCE: Schroeder, SA. (2007). We Can Do Better — Improving the Health of the American People. *NEJM*. 357:1221-8.



Poor Health and Economic Mobility

HealthAffairs Blog

HOME TOPICS JOURNAL BRIEFS EVENTS PODCASTS ARCHIVE

HEALTH EQUITY

ASSOCIATED TOPICS: POPULATION HEALTH

The United States Can Reduce Socioeconomic Disparities By Focusing On Chronic Diseases

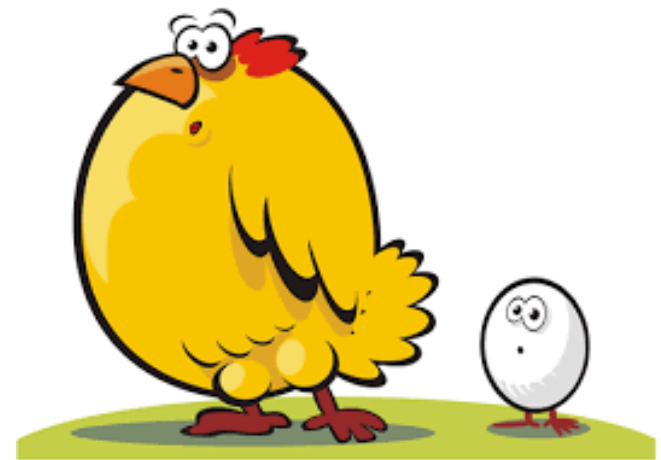
Kenneth Thorpe, Kathy Ko Chin, Yanira Cruz, Marjorie A. Innocent, and Lillian Singh

August 17, 2017



PARTNERSHIP TO FIGHT
CHRONIC DISEASE

- Onset of chronic illness reduces income by 18%.
- Lower income populations disproportionately affected.



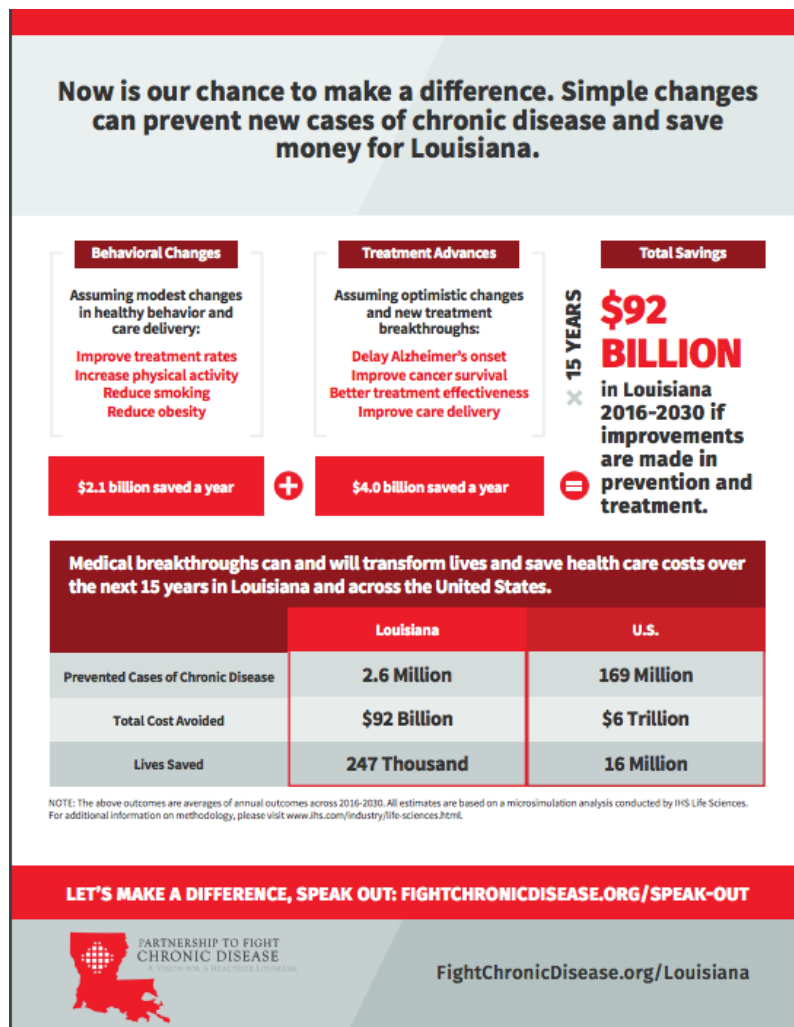
Louisiana's Chronic Disease Opportunity

Potential To Save:

- \$92 Billion through 2030
- 347,000 people

Improvements Include:

- Reduced smoking
- Reduced obesity
- Better access & adherence to treatment
- Medical innovations to increase cancer survival & postpone Alzheimer's onset



High-Performing Health Systems

- Prioritize care coordination & care transitions.
- Identify the “hot spots” – high cost & high risk.
- Engage people in own care.
 - Self-management skill building
 - Medication management
 - Regular follow-up
- Integrate health & social services, physical & mental health care.



Building on Existing Efforts

- Improving access to quality care
 - ✦ CHIP, Medicaid expansion & enrollment
- Enhancing access to patient-centered primary care
 - ✦ Participation in Advanced Primary Care Practice Demonstration
 - >> FQHCs meeting NCQA criteria of patient-centered medical homes
- Joining larger initiatives
 - ✦ Million Hearts Initiative: Cardiovascular Disease Risk Reduction
 - ✦ TCPI: Consortium for Southeastern Hypertension Control

Building on Existing Efforts

- Optimizing appropriate use of medications
 - ✦ Louisiana Community Pharmacy Enhanced Services Network
- Recognizing inter-relationships between health & determinants of health
 - ✦ Department of Health & Housing Authority Permanent Supportive Housing



PARTNERSHIP TO FIGHT CHRONIC DISEASE

Chronic Disease: Costs, Challenges & Opportunities for Improvement

September 7, 2017
Baton Rouge, Louisiana