



Primary Care Resources



The following agencies offer discounted payment for primary care services on a sliding fee scale based on your income.

Please call to confirm the type of documentation required to receive discounted services.

Ascension Parish

St. Elizabeth Community Clinic

1024 S.E. Ascension Complex Blvd., Gonzales
(225) 644-2616

East Baton Rouge Parish

Dr. David and Bevelyn Mays Community Health Center

2013 Central Road, Baton Rouge
(225) 774-1120

St. Martin de Porres Clinic

220 St. Vincent De Paul Place, Baton Rouge
(225) 343-9086

*No charge for services for the homeless.
Please bring picture ID and proof of income.

Capitol City Family Health Center

3140 Florida Blvd., Baton Rouge
(225) 650-2000

Chaneyville Medical Clinic

13211 Jackson Road, Zachary
(225) 654-1298

Pointe Coupee Parish

Innis Community Health Center

6450 Hwy. 1, Suite B, Innis
(225) 492-3775

Livonia Community Health Center

3041 Fordoche Road, Livonia
(225) 637-3535

Pointe Coupee Central School Based Health Center

8434 Pointe Coupee Road, Morganza
(225) 638-3767

East Feliciana Parish

RKM Primary Care

11990 Jackson Street, Clinton
(225) 683-5292

*Contact for referrals for dental and mental health services.

Clinton Lower Health Center

10701 Reiley Street, Clinton
(225) 683-1350

Clinton Middle School Based Health Center

10410 Plank Road, Clinton
(225) 683-1340

Jackson Complex Health Center

3501 Hwy. 10, Jackson
(225) 638-1360

Slaughter Health Center

3170 Church Street, Jackson
(225) 683-1370

Iberville Parish

St. Gabriel Health Clinic

5760 Monticello Dr., St. Gabriel
(225) 642-9676

East Iberville School Based Health Clinic

3285 Hwy. 75, St. Gabriel
(225) 642-9911

West Baton Rouge Parish

West Baton Rouge Primary Care

751 Court Street, Port Allen
(225) 389-1311

LSU Health-Baton Rouge Primary Care Clinics

(225) 358-4853

*New patients must call to schedule appointments for any of the LSU Clinic locations.

Patients seen in the LSU clinics and hospitals may be eligible for free care benefits upon proof that their household earns below 200% of the Federal Poverty Level. Payment plans are offered to those patients ineligible for free care. Medicaid, Medicare and private insurances are also accepted.

Clinic locations:

- Family Practice – Mid City Campus (NCQA recognized medical home)
1401 N. Foster Drive
- South Baton Rouge Clinic – Leo Butler Community Center
950 E. Washington Avenue
(NCQA recognized medical home)
- North Baton Rouge Primary Care Clinic
5439 Airline Highway

Greater Baton Rouge Community Clinic

(225) 769-3377

* Program is for working low income individuals. You must have worked 10 out of the last 12 months for at least 30 hours per week. Income up to 200% of the Federal Poverty Level. Cannot be currently receiving any form of state or federal assistance. Must provide income tax statement, two current check stubs and photo ID and proof of residency. Call (225) 769-3377 to set up an appointment to see if you qualify.

To print additional copies, access this brochure at www.lds.la.gov/healthuninsured

Prescription Drug Resources



Partnership for Prescription Drug Assistance

1-888-477-2669 or www.pparx.org

St. Vincent De Paul Community Pharmacy

(225) 383-7450

Capital Area Agency on Aging SenioRx Program

(225) 287-7417 or 1-800-280-0908

• CVS, Walgreens, Walmart and Target all have generic pharmacy discount programs for an average of \$4.00 per 30 day prescription.

Dental Resources



Louisiana Donated Dental Services

1-800-946-6016

*Patients must be low income, handicapped, disabled or over the age of 65. Program provides services throughout the state. An application must be completed prior to receiving services. The program currently has a waiting list of up to one year.

LSU School of Dentistry Dental Clinic

9032 Perkins Rd., Baton Rouge
(225) 768-5880; (225) 768-5881 (fax)

*New patients are accepted by faxed referral only from current private dentist or primary care dental clinic. All patients are charged on a set reduced fee schedule.

The following clinics provide discounted dental care services with a sliding scale fee schedule. You must provide proof of income at appointment to receive discounted services.

- EXCELth, Inc. Dental Clinic - 4560 North Blvd., Suite 120, Baton Rouge, (225) 216-3280
- Capitol City Family Health Center - 3140 Florida Blvd., Baton Rouge, (225) 650-2000
- RKM Primary Care - 11990 Jackson Street, Clinton, (225) 683-5292
- Eastside Community Health Center - 5035 Iberville St., Suite 23, St. Gabriel, (225) 645-5025
- St. Gabriel Health Clinic - 5760 Monticello Drive, St. Gabriel, (225) 642-9676

Other Resources

Louisiana 2-1-1

Dial: 2-1-1

Website: www.Louisiana211.org



*Provides a single access point 24/7 to information and referrals to available health and human services for Louisiana citizens' everyday needs and in times of crisis.

Medline BR - (225) 765-6906

*A 24-hour hotline for the uninsured and underinsured in the Greater Baton Rouge area. Callers will be assisted by RNs with community referrals and appointments for primary health care services. All services are provided on a sliding scale fee basis.

Cancer Screening

Mary Bird Perkins Cancer Center

www.marybird.org

(225) 215-1234

* Early detection program offers free cancer screenings to the uninsured and underinsured throughout 18 parishes in southeast Louisiana. Cancer screenings offered include oral, breast, prostate, colorectal and skin.



Encoreplus YWCA Greater Baton Rouge

(225) 215-1324

* Provides medically underserved women in the Greater Baton Rouge area with breast and cervical education, cancer screening referrals and support services.

Resource for Military Veterans

Baton Rouge VA Outpatient Clinic

7968 Essen Park Avenue

Baton Rouge, (225) 761-3400

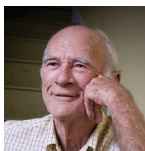


Resources for Senior Citizens

Capital Area Agency on Aging

1-800-833-9883

* Provides resources and referrals for senior citizens.



• **Ascension Council on Aging** - (225) 473-3789

• **East Baton Rouge Council on Aging** - (225) 923-8000

• **East Feliciana Council on Aging** - (225) 683-9862

• **Iberville Council on Aging** - (225) 687-9682

• **Pointe Coupee Council on Aging** - (225) 638-4402

• **West Baton Rouge Council on Aging** - (225) 383-0638

• **West Feliciana Council on Aging** - (225) 635-6719

Health Care Coverage Options

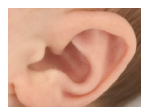
• **Louisiana Medicaid Customer Service Number**
1-888-342-6207

• **Louisiana Health Plan - High Risk Health Insurance Pool** - 1-800-736-0947

• **LaCHIP Children's Health Insurance Program**
1-877-252-2447



Hearing Aid and Testing Resource



Baton Rouge Speech and Hearing Foundation

(225) 343-4232; www.brshf.org

*Offers two financial assistance programs for those who qualify, greatly reducing the cost for hearing aids. Accepts Medicaid and Medicare. Offers discounted hearing evaluations, as well as outreach hearing screenings in the community. Must have ID, proof of insurance, and prescription if on Medicare.

HIV Support Programs

*The following programs provide support services for HIV positive individuals including assistance with housing needs and counseling services. For individuals seeking medical care please refer to the Medical Care Section.

St. Anthony's - (225) 923-1389

HAART

4560 North Blvd. #101, Baton Rouge, (225) 927-1769

Family Services of Greater Baton Rouge

4727 Revere Avenue, Baton Rouge, (225) 927-9810

Medical Care -

Uninsured HIV Patients

The Early Intervention Clinic/LSU Midcity Clinic

1401 North Foster, Baton Rouge, (225) 987-9155

The Caring Clinic

4560 North Blvd. Suite 101, Baton Rouge

(225) 341-5901

Capitol City Family Health Center

3140 Florida Street, Baton Rouge, (225) 650-2000

Mental Health & Substance Abuse Resources



EXCELth Behavioral Health Clinic, Inc.

4560 North Blvd. Suite 104, Baton Rouge

(225) 201-9862

*Discounted payment is available, must bring proof of income and a picture ID.

Family Services of Greater Baton Rouge

4727 Revere Avenue; (225) 927-9810

*Provides counseling services for children, adults and families on a sliding fee scale based upon income.

Metro Health

950 E. Washington Street, Baton Rouge

(225) 338-9333

*Provides substance abuse counseling and referrals.

Capital Area Center for Adult Behavioral Health Services

4615 Government Street, Building 2; (225) 925-1906

Margaret Dumas Mental Health Center

3843 Harding Boulevard, Baton Rouge; (225) 359-9315

Baton Rouge Crisis Intervention Center

The PHONE: (225) 924-3900; www.CrisisChat.org

*Provides 24 hour crisis counseling, online emotional support and a weekly support group for those bereaved by suicide.

Gonzales Mental Health Center

1112 S.E. Ascension Complex Avenue; (225) 621-5770

RKM Child & Adolescent Bereavement Service

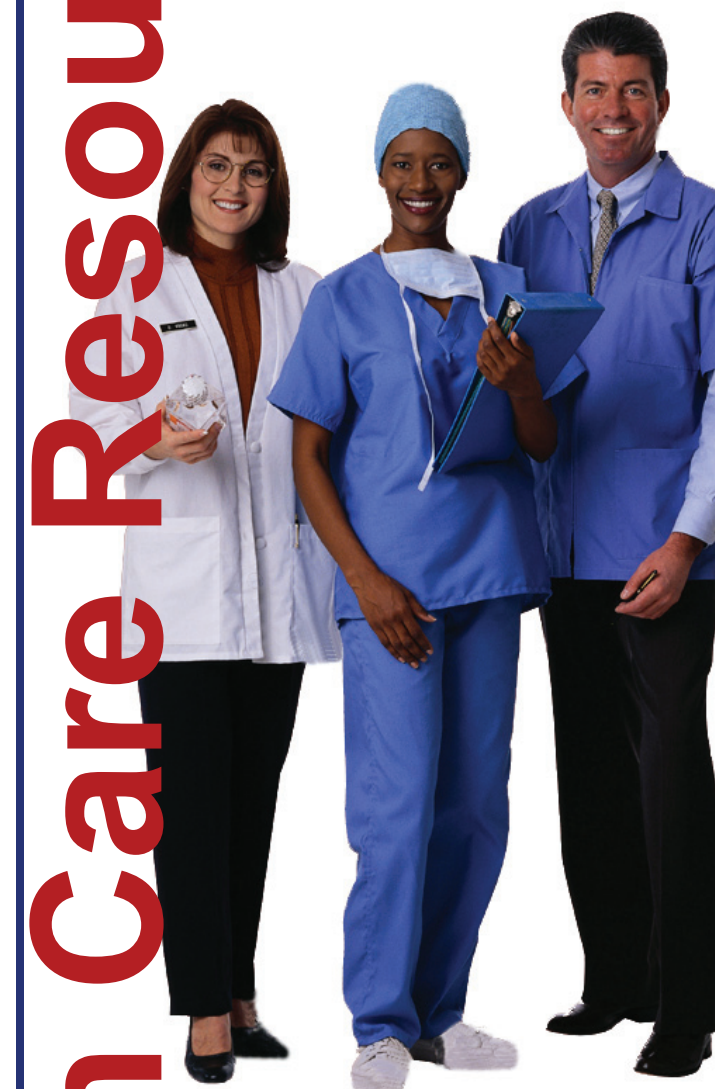
11990 Jackson St., Clinton; (225) 683-1320

www.lidi.la.gov/healthuninsured

Louisiana Department of Insurance

This public document is published at a total cost of \$2,287.92. 20,000 copies of this public document were published in this first printing at a cost of \$1,675. The total cost of all printings of this document including reprints is \$2,287.92. This document was published by Moran Printing, 5425 Florida Blvd., Baton Rouge, LA 70806 to provide information on health care resources available to those who are uninsured under authority of the Division of Administration. This material was printed in accordance with standards for printing by State Agencies established in R.S. 43:31. Printing of this material was purchased in accordance with the provisions of Title 43 of the Louisiana Revised Statutes.

Health Care Resources For The Uninsured



Greater Baton Rouge Area

Ascension, E. Baton Rouge, W. Baton Rouge, E. Feliciana, W. Feliciana, Iberville, Pointe Coupee

www.lidi.la.gov/healthuninsured

LHCC
Louisiana Health Care Commission