

# LOUISIANA MOVE IT LAW

Louisiana Strategic Highway Safety Plan

# Introduction

---

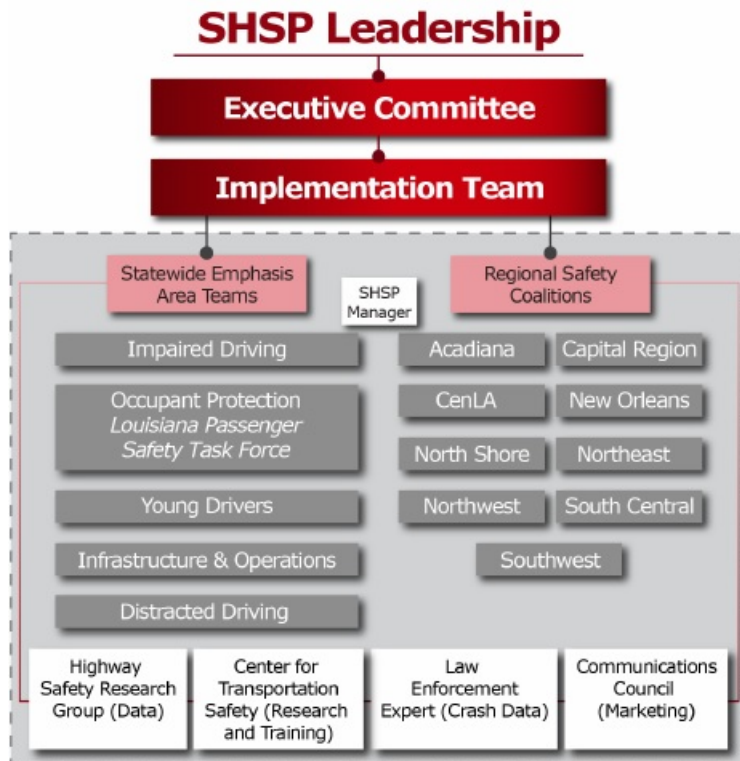
- Dan Jatres, Regional Safety Coalition Coordinator, New Orleans Regional Transportation Safety Coalition
- Sgt. Jared Sandifer, Region 1 Supervisor, Louisiana State Police Public Affairs
- Senior Trooper Bryan Lee, Public Information Officer, Louisiana State Police Troop A

# Agenda

---

- Louisiana SHSP and the Regional Coalitions
- Move It Law
- LPCIC's Role

# Louisiana Strategic Highway Safety Plan (SHSP) and Regional Coalitions

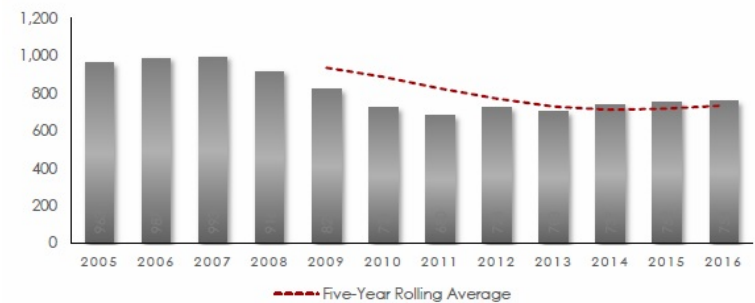


- Comprehensive, data-driver multidisciplinary approach to traffic safety
- Newly revised and updated in August 2017
- 5 Statewide Emphasis Areas
- 9 Regional Coalitions

# Traffic Crashes in Louisiana

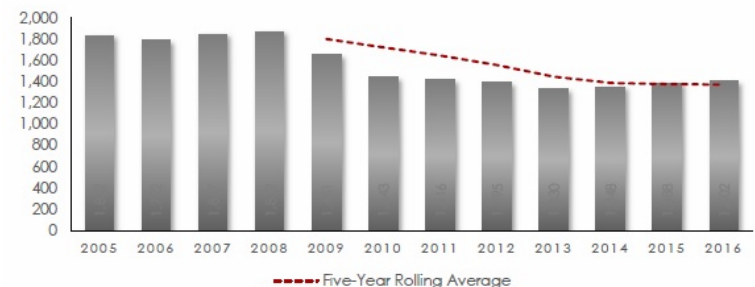
- Over the last 10 years:
  - Fatalities are down 24% (963 to 752)
  - Severe injuries are down 24% (1,832 to 1,388)
- However, the rolling 5-year average of both are trending back upward in recent years

Figure 2.1 Traffic Fatalities by Year



Source: FARS 2017, Louisiana SHSP Reporting Dashboard, 2017. (Note: 2016 fatality and severe injury data is preliminary.)

Figure 2.2 Severe Injuries by Year



Source: FARS 2017, Louisiana SHSP Reporting Dashboard, 2017. (Note: 2016 fatality and severe injury data is preliminary.)

# Louisiana Move It Law R.S. 32:141 (D)

- Louisiana Law: in the event of a crash “the driver **shall** remove the vehicle from the travel lane” so long as:
  - ▣ There are no fatalities or serious injuries
  - ▣ The vehicle is not disabled by the crash
  - ▣ The driver is not prevented by injury from moving the vehicle
- “Shall” means action is required

# Purpose of the Move It Law



- Reduces risk of secondary crashes
  - ▣ First responders
  - ▣ Other drivers
  - ▣ 1 in 4 chance secondary crashes result in a fatality
- Restores flow of traffic
  - ▣ Clears the roadway of obstructions
  - ▣ 4 minutes of delay for every 1 minute of blockage

# Raising Awareness of the Move It Law

- Reactive
  - ▣ First Responders
  - ▣ 911 Operators
  - ▣ MAP Operators
- Proactive
  - ▣ Driver's Manual
  - ▣ Roadway Signage
- Future
  - ▣ Insurance Cards
  - ▣ Dynamic Message Signs





# LPCIC's Role

- Place Move It Law message on Louisiana Motor Vehicle Insurance Cards
- Benefits
  - Wide audience: all insured drivers in Louisiana
  - Consistent message: printed message reduces confusion or conflicting messages
  - Timely message: people look at their insurance cards after an accident

Questions?

Dan Jatres

504.483.8505

[djatres@norpc.org](mailto:djatres@norpc.org)

Sgt Jared Sandifer

Senior Trooper Bryan Lee

Louisiana State Police